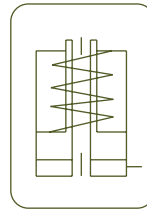


**ALUMINIUM SINGLE ACTING CYLINDERS, HOLLOW PISTON, SPRING RETURN**

- ✓ Lightweight hollow cylinders from 22 to 100 Tn and up to 250 mm stroke.
- ✓ Made out of high strength aluminium alloy.
- ✓ Hollow piston, spring return.
- ✓ All aluminium parts are treated to improve resistance and extend working life.
- ✓ Fitted with steel base plate and saddle for wear resistance.
- ✓ 40% weight reduction when compared with steel equivalent.
- ✓ Hollow plain saddle as standard.
- ✓ Not suitable for high cycle applications.



Larzep designs and manufactures special aluminium cylinders and fixing system upon request.

**HOLLOW PISTON ALUM. CYLINDERS**



Type	<b>SAH</b>
Capacity	22 - 100 Tn
Stroke	50 - 250 mm
Max. pressure	700 bar

SAH CYLINDERS



**AZ04 & AZ05**  
Optional Saddles available  
Plain, threaded or solid



P.118

**W**  
Single Acting Hand Pumps



P.80

**DAH**  
Aluminium Double Acting  
Hollow Piston Cylinders



P.70

**WA**  
Aluminium Hand Pumps



P.82



**HBM / HBE**  
Powerpack



P.88

**Z12107**  
Air Hydraulic Pump

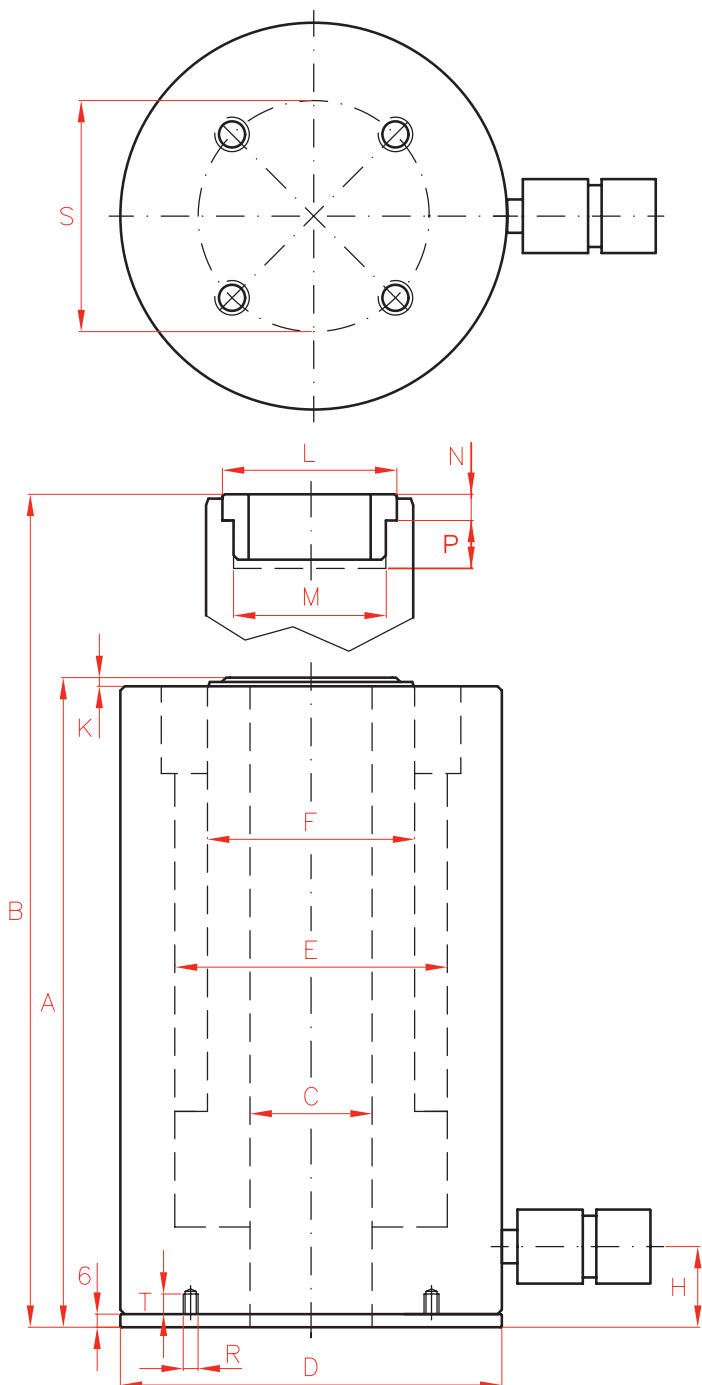


P.86

**W**  
Single Acting Hand Pumps



P.80



Capacity		Stroke	Model	Oil Cap.	A
Tn	kN	mm	LARZEP	cm <sup>3</sup>	mm
22	217	50	SAH02205	158	183
		100	SAH02210	316	253
		150	SAH02215	474	323
		200	SAH02220	632	383
		250	SAH02225	790	448
30	302	50	SAH03005	220	210
		100	SAH03010	440	278
		150	SAH03015	660	350
		200	SAH03020	880	410
		250	SAH03025	1.100	475
60	578	50	SAH06005	421	243
		100	SAH06010	842	298
		150	SAH06015	1.263	363
		200	SAH06020	1.684	428
		250	SAH06025	2.105	493
100	1.018	50	SAH10005	742	260
		100	SAH10010	1.484	327
		150	SAH10015	2.226	397
		200	SAH10020	3.968	462
		250	SAH10025	3.710	532

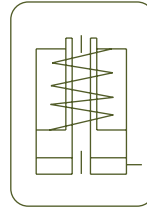


**AZ04 & AZ05**

Optional Saddles available  
Plain, threaded or solid



P.118



**HOLLOW PISTON ALUM. CYLINDERS**



Type

**SAH**

Capacity

**22 - 100 Tn**

Stroke

**50 - 250 mm**

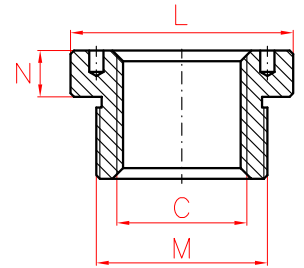
Max. pressure

**700 bar**

SAH CYLINDERS

**OPTIONAL THREADED SADDLES**

Cylinder Model	Model	C	L	M	N
LARZEP	LARZEP	UN	mm	UN	mm
SAH022	<b>AZ0552</b>	1"-8	48	1 9/16"-16	8
SAH030	<b>AZ0553</b>	1 1/4"-7	55	1 13/16"-16	9
SAH060	<b>AZ0556</b>	1 5/8"-5 1/2	80	2 3/4"-16	12
SAH100	<b>AZ0560</b>	2 1/2"-8	116	4"-16	13



P.118

	B	C	D	E	F	H	K	L	M	N	P	R	S	T	Area	Weight	Model
	mm	mm	mm	mm	mm	mm	mm	mm	UN	mm	mm		mm	mm	cm <sup>2</sup>	kg	LARZEP
	233	27	100	75	56	26	3	48	1 9/16"-16	8	20	M6	85	19	32	4,5	<b>SAH02205</b>
	353	27	100	75	56	26	3	48	1 9/16"-16	8	20	M6	85	19	32	5,8	<b>SAH02210</b>
	473	27	100	75	56	26	3	48	1 9/16"-16	8	20	M6	85	19	32	7,0	<b>SAH02215</b>
	587	27	100	75	56	26	3	48	1 9/16"-16	8	20	M6	85	19	32	8,0	<b>SAH02220</b>
	698	27	100	75	56	26	3	48	1 9/16"-16	8	20	M6	85	19	32	8,8	<b>SAH02225</b>
	260	33	130	90	68	32	4	55	1 11/13"-16	9	22	M6	110	19	44	7,5	<b>SAH03005</b>
	378	33	130	90	68	32	4	55	1 11/13"-16	9	22	M6	110	19	44	10,0	<b>SAH03010</b>
	500	33	130	90	68	32	4	55	1 11/13"-16	9	22	M6	110	19	44	11,5	<b>SAH03015</b>
	610	33	130	90	68	32	4	55	1 11/13"-16	9	22	M6	110	19	44	13,0	<b>SAH03020</b>
	725	33	130	90	68	32	4	55	1 11/13"-16	9	22	M6	110	19	44	14,6	<b>SAH03025</b>
	293	56	175	125	95	37	4	80	2 3/4"-16	12	22	M6	155	19	84	16,3	<b>SAH06005</b>
	398	56	175	125	95	37	4	80	2 3/4"-16	12	22	M6	155	19	84	19,5	<b>SAH06010</b>
	513	56	175	125	95	37	4	80	2 3/4"-16	12	22	M6	155	19	84	23,4	<b>SAH06015</b>
	628	56	175	125	95	37	4	80	2 3/4"-16	12	22	M6	155	19	84	26,0	<b>SAH06020</b>
	743	56	175	125	95	37	4	80	2 3/4"-16	12	22	M6	155	19	84	32,0	<b>SAH06025</b>
	310	81	235	170	130	40	6	116	4"-16	13	25	M6	215	19	148	31,0	<b>SAH10005</b>
	427	81	235	170	130	40	6	116	4"-16	13	25	M6	215	19	148	38,0	<b>SAH10010</b>
	547	81	235	170	130	40	6	116	4"-16	13	25	M6	215	19	148	45,0	<b>SAH10015</b>
	662	81	235	170	130	40	6	116	4"-16	13	25	M6	215	19	148	53,0	<b>SAH10020</b>
	782	81	235	170	130	40	6	116	4"-16	13	25	M6	215	19	148	61,0	<b>SAH10025</b>